

Crystal DNA Loading Buffer

Exp. Date:	See vial	Product	Catalog number
Batch No.:	See vial	5x Loading Buffer Blue	BIO-37045: 2 x 1ml
		5x Loading Buffer Red	BIO-37068: 2 x 1ml
		5x Loading Buffer Tri-Color	BIO-37070: 2 x 1ml



A Meridian Life Science® Company

Storage and Stability:

The Crystal DNA Loading Buffer can be stored at -20°C for up to 24 months from the date of purchase.

Shipping:

Crystal DNA Loading Buffer is shipped at ambient temperature

Quality control:

Crystal 5x DNA Loading Buffer is tested for contaminating nuclease activity. Migration of dye is tested by agarose gel electrophoresis.

Safety precautions:

May cause Irritation to eyes, respiratory system and skin. Please refer to the material safety data sheet for further information.

Notes:

1. This product insert is a declaration of analysis at the time of manufacture.
2. Research Use Only.
3. BioTaq is a trademark of Bioline

Features:

- Colored loading for easy recognition
- No need to add dye
- Guarantee reproducible results

Applications:

- To monitor migration rate during agarose electrophoresis
- Loading of samples onto DNA agarose gels

Description

The Colored Crystal DNA Loading Buffers are ready-to-use solutions premixed with bromophenol blue (Blue), cresol red (Red), orange G and xylene cyanol FF (TriColor). The dyes in the Colored Crystal DNA Loading Buffers migrate at different rates depending on the dye and the concentration of the agarose gel (see Dye Migration Table below). This allow users to monitor DNA migration, and therefore increase the versatility of their DNA analysis, by choosing the buffer most suited to their application.

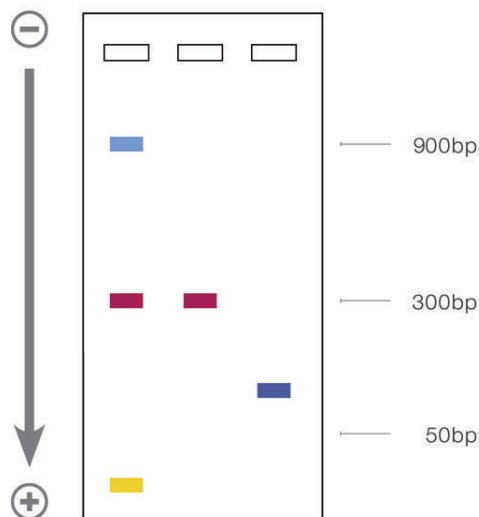
Recommended protocol

1. Add 1 volume of loading buffer to 4 volumes of sample
2. Mix well by pipeting
3. Load carefully on agarose gel and run as normal

Dye mobility table:

The following table gives the approximate migration rates of dyes in different agarose concentrations in TAE buffer. The values indicate the size of DNA fragments with which the dye will co-migrate at that particular gel concentration.

Agarose gel Concentration	Xylene Cyanol FF	Bromophenol Blue	Cresol Red	Orange G
0.7%	8000	600	3000	100
1.0%	4000	400	1500	50
1.5%	2000	250	900	20
2.0%	900	120	300	<10
3.0%	400	50	>100	<10



Graphic representation of Crystal DNA Loading Buffers on a 2% agarose gel (bands are approximate).

- Lane 1. Crystal 5x DNA Loading Buffer Tri-Color
 Lane 2. Crystal 5x DNA Loading Buffer Red
 Lane 3. Crystal 5x DNA Loading Buffer Blue

Associated products:

Product Name	Pack Size	Catalog No.
Agarose, Molecular Grade	500g	BIO-41025
Agarose Tablets	500g	BIO-41027
BioTaq™ PCR Kit	500U	BIO-21071

Bioline Ltd
UNITED KINGDOM

Tel: +44(0)20 8830 5300
Fax: +44 (0)20 8452 2822

Bioline USA Inc.
USA

Tel: +1 508 880 8990
Fax: +1 508 880 8993

Bioline GmbH
GERMANY

Tel: +49(0)33 7168 1229
Fax: +49 (0)337168 1244

Bioline (Aust) Pty. Ltd
AUSTRALIA

Tel: +61 (0)2 9209 4180
Fax: +61 (0)2 9209 4763