

# HyperPAGE II Prestained Protein Marker

Protein Marker: 10kDa to 250kDa

Shipping: On Dry/Blue Ice Catalog Number

Exp. Date: See vial BIO-33067: 25-50 lanes

Batch No.: See vial



A Meridian Life Science® Company

Store at -20°C

## Storage and Stability:

Product is shipped on dry/blue ice and should be stored at -20°C upon receipt. The marker can be stored at 4°C for up to three months or -20°C for one year. Avoid excessive freeze/thaw cycles.

## Storage Buffer:

62.5mM Tris-HP<sub>3</sub>O<sub>4</sub> (pH 7.5 at 25°C), 1mM EDTA, 2% SDS, 10mM DTT, 1mM NaN<sub>3</sub>, 33% glycerol.

## Quality Control:

Bioline operates under the ISO 9001 Management System.

## Safety Precautions:

Harmful if swallowed. Irritating to eyes and skin. Please refer to the material safety data sheet for further information.

See Box Label for Calibrated Molecular Weights

## Description

HyperPAGE II is a broad range prestained protein marker containing nine highly purified recombinant proteins with molecular weights ranging from 10kDa to 250kDa. The proteins are prestained with different fluorescent dyes and resolve into sharp clearly identifiable bands for easy visualization and orientation. The green 10kDa and orange 70kDa bands serve as useful reference bands. For convenience, the marker is supplied in a ready-to-load format; eliminating the need to heat, reduce, dilute or add loading dyes.

HyperPAGE II is suitable to monitor migration efficiency in SDS-PAGE and protein transfer from gel to membrane in Western blotting, without the addition of staining dye. Prestained protein markers are suitable for determining the approximate molecular weights of proteins.

## Product components

Reagent	25-50 lanes
HyperPAGE II Prestained Protein Marker	250µl

## Usage in Polyacrylamide Gel Electrophoresis

Thaw marker at room temperature; do not boil/heat.

Mix marker thoroughly by gentle vortexing.

Standard gel: load 10µl per lane (0.75-1mm thick) or 20µl per lane (1.5mm thick).

Mini-gel: load 5µl per lane (0.75mm thick) or 10µl per lane (1.5mm thick).

## Important Considerations

Prestained proteins may display a different mobility in different SDS-PAGE buffer systems. Each buffer system has a slightly different pH which affects the charge of a protein and its binding capacity for SDS. However, they are suitable for approximate molecular weight determination when calibrated against unstained standards in the same system. For accurate sizing, the use of unstained markers is recommended.

In low percentage gels (<10%), the low molecular weight proteins may migrate with the dye front.

For Western blotting, longer transfer times or higher voltages may be required for the large proteins (>100kDa).

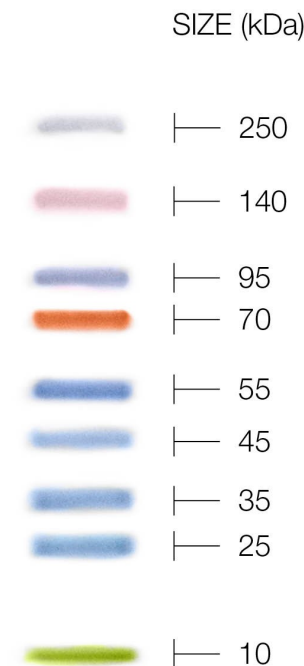
Please consult box label for calibrated molecular weights.

## Associated Products

Product	Description	Pack Size	Cat No.
HyperPAGE	Broad range prestained protein marker 10-190kDa (lyophilized)	10-20 Lanes 50-100 Lanes	BIO-33065 BIO-33066
BL21 Cells	BL21 Competent Cell Combo Pack	1.5ml (15 x 100µl)	BIO-85035

### Notes:

1. This product insert is a declaration of analysis at the time of manufacture.
2. Research use only.



Band sizes are approximate

Bioline Reagents Ltd  
UNITED KINGDOM

Tel: +44(0)20 8830 5300  
Fax: +44 (0)20 8452 2822

Bioline USA Inc.  
USA

Tel: +1 508 880 8990  
Fax: +1 508 880 8993

Bioline GmbH  
GERMANY

Tel: +49(0)33 7168 1229  
Fax: +49 (0)337168 1244

Bioline (Aust) Pty. Ltd  
AUSTRALIA

Tel: +61 (0)2 9209 4180  
Fax: +61 (0)2 9209 4763