

# ISOLATE II Genomic DNA Kit

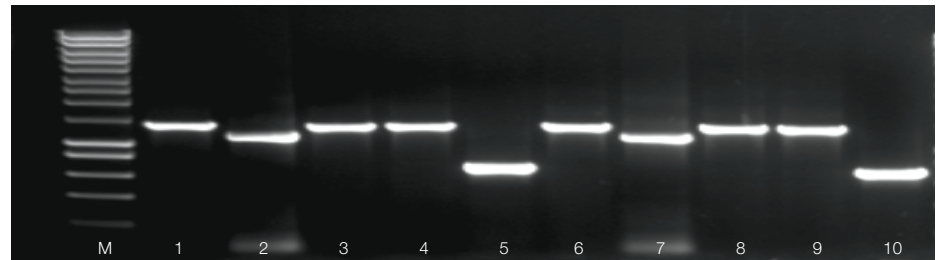
A Precious Find

- **Efficient:** streamlined protocol for consistent recovery of genomic DNA in as little as 20 minutes
- **High-performance:** extraction of high-purity genomic DNA, ideal for use in all downstream applications
- **High-yield:** efficient sample lysis and column-binding for high-yield recovery of genomic DNA from limiting amounts of sample
- **Flexible:** reliable extraction of genomic DNA from a broad range of human, animal and microbial samples

**ISOLATE II Genomic DNA Kit provides a simple, efficient column-based method for the isolation of genomic DNA from a wide variety of materials, without the need for hazardous reagents such as phenol.**

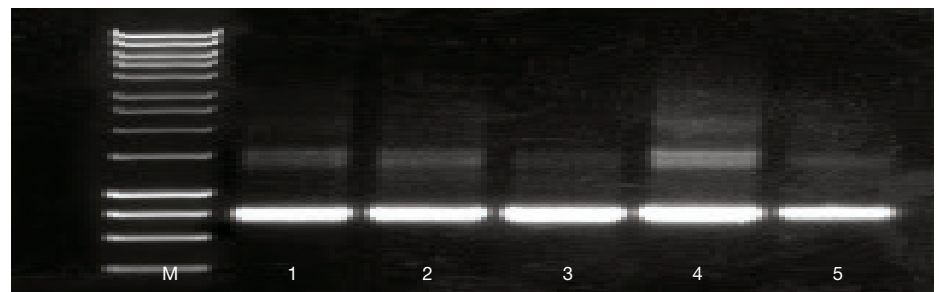
By combining Proteinase K lysis with the speed and convenience of silica membrane purification, ISOLATE II Genomic DNA Kit provides a fast method for the purification of high-quality genomic DNA from a variety of starting materials (Fig. 1).

ISOLATE II Genomic DNA Kit has been designed to deliver optimal performance in qPCR with SensiFAST™ SYBR® and Probe Kits, or in end-point PCR with MyTaq™ DNA Polymerase.



**Fig 1. PCR analysis of genomic DNA extracted from a range of different species**

Genomic DNA was isolated in duplicate from 3T3 cells, HeLa cells, mouse lung, mouse tail and *E. coli*, using the ISOLATE II Genomic DNA Kit (lanes 1 – 5 and 6 – 10 respectively, HyperLadder 1kb (M)) and then used to amplify a fragment of the Rn18s gene (16S rRNA gene for the *E. coli*) using MyTaq DNA Polymerase. The results illustrate the consistency in the quality of genomic DNA that has been purified across a broad range of species.



**Fig 2. PCR analysis of genomic DNA extracted from different species of gorilla**

Genomic DNA was isolated from hair samples of eastern lowland gorilla (*G. beringei graueri*), western gorilla (*G. gorilla*), northern plains gray langur (*S. entellus*), white-headed langur (*T. poliocephalus*) (museum sample) and red-shanked douc (*P. nemausus*) (lanes 1 – 5 respectively, HyperLadder 1kb (M)). The genomic DNA was then used to PCR a 620 bp fragment of the  $\beta$ -actin gene using MyTaq Mix™, to illustrate the quality, purity and yield of the DNA extracted across a broad range of samples.

[bioline.com/isolate](http://bioline.com/isolate)

**bioline**  
meridian BIOSCIENCE

## APPLICATIONS

- qPCR
- End-point PCR
- Southern, dot and slot blotting
- Genotyping
- Restriction digestion
- Next generation sequencing
- Bisulfite conversion/methylation analysis

## FLEXIBLE

The product manual contains protocols for purifying DNA from mouse or rat tails, bacteria, yeast, dried blood spots, genomic/viral DNA from blood, hair follicles (Fig. 2), paraffin-embedded tissue (FFPE), insects, dental swabs, buccal swabs, stool viruses (e.g. CMV), *Mycobacterium tuberculosis* or *Legionella pneumophila* in sputum or bronchoalveolar lavage, EHEC bacteria in food, bacterial DNA (e.g. *Chlamydia trachomatis*) from cultures, biological fluids or clinical specimens, bacterial DNA (e.g. *Borrelia burgdorferi*) and viral DNA (e.g. CMV) from urine.



*I used the ISOLATE II Genomic DNA Kit to extract genomic DNA from mice tails for genotyping. The kit comes with very clear, user-friendly instructions and provides efficient, reliable and cost effective isolation of DNA. Overall a great kit for genomic DNA extraction and downstream analysis."*



Wilson Wong, University of Sydney, Camperdown, Australia

## Ordering Information

ISOLATE II Genomic DNA Kit	Size	Cat. #
	10 Preps	BIO-52065
ISOLATE II Genomic DNA Kit	50 Preps	BIO-52066
	250 Preps	BIO-52067

For related products such as our end-point PCR and qPCR kits please visit [www.bioline.com](http://www.bioline.com)



PSGBL0418V1.0

**USA**  
email: [info.us@bioline.com](mailto:info.us@bioline.com)  
Toll Free: +1 888 257 5155

**France**  
email: [info.fr@bioline.com](mailto:info.fr@bioline.com)  
Tel: +33 (0)1 42 56 04 40

[bioline.com/isolate](http://bioline.com/isolate)

**United Kingdom**  
email: [info.uk@bioline.com](mailto:info.uk@bioline.com)  
Tel: +44 (0)20 8830 5300

**Australia**  
email: [info.au@bioline.com](mailto:info.au@bioline.com)  
Tel: +61 (0)2 9209 4180

To find a Bioline distributor in your country, visit [bioline.com/distributors](http://bioline.com/distributors)

**Germany**  
email: [info.de@bioline.com](mailto:info.de@bioline.com)  
Tel: +49 (0)3371 60222 00

**Singapore**  
email: [info.sg@bioline.com](mailto:info.sg@bioline.com)  
Toll Free: 1800 BIOLINE (2465463)

**bioline**  
**meridian** BIOSCIENCE