

Fire up your PCR



IMMOLASE™ DNA Polymerase

- For PCR assays requiring hot-start
- Ultra-high specificity for multiplex reactions
- Highly suited to real-time assays
- Ready-to-go versions: ImmoMix™ and ImmoMix™ Red

IMMOLASE™ is a heat-activated thermostable DNA polymerase which provides improved specificity when compared to standard polymerases and can eliminate the presence of non-specifics, such as primer-dimers and mis-primed products. IMMOLASE is inactive at room temperature and therefore requires activation by heat treatment for 10 minutes, prior to PCR. Subsequently, the reaction can be handled according to the user's existing protocols for thermostable DNA polymerases.

IMMOLASE is suited to many PCR assays including:

- Assays requiring low background and high yield
- Detection of low copy number targets
- Multiplex PCR reactions

Specificity and performance of IMMOLASE can be further improved with the use of 2x PolyMate Additive (not supplied), which is designed for GC or AT-rich DNA, "dirty" templates or sequences with difficult melting profiles.

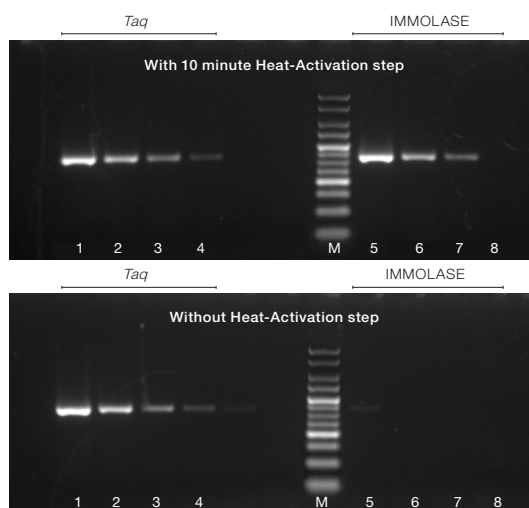


Illustration of the heat-activation property of IMMOLASE.
A 200bp fragment from pGEM3zf(+) was amplified using 2 Units of IMMOLASE DNA Polymerase. The fragment was amplified from 1ng of DNA followed by a 10-fold dilution series. The PCR reactions were performed with a heat-activation step (lanes 1-4) and without a heat-activation step (lanes 5-8). Using IMMOLASE DNA Polymerase, no activity was detectable without heat-activation. Marker is HyperLadder V.

Ordering Information

PRODUCT	PACK SIZE	CAT NO.
IMMOLASE DNA Polymerase	250 Units	BIO-21046
IMMOLASE DNA Polymerase	500 Units	BIO-21047
IMMOLASE DNA Polymerase	5000 Units	BIO-21048
ImmoMix	100 Reactions	BIO-25019
ImmoMix	500 Reactions	BIO-25020
ImmoMix Red	100 Reactions	BIO-25021
ImmoMix Red	500 Reactions	BIO-25022
PolyMate Additive	2 x 1.2 ml	BIO-37041

PS0408V2

United Kingdom
Tel: +44 (0)20 8830 5300

USA
Toll Free: 888 257 5155

Germany
Tel: +49 (0)3371 681 229

Australia
Tel: +61 (0)2 9209 4180

www.bioline.com

