

HyperLadder™ 1kb

Shipping: Room Temperature

Catalog numbers

Batch No.: See vial

BIO-33053: 100 Lanes

BIO-33025: 200 Lanes

BIO-33026: 500 Lanes



Storage and stability:

HyperLadder 1kb is shipped at room temperature. On arrival store at -20°C for optimum stability.

Expiry:

When stored under the recommended conditions and handled correctly, band quality is retained until the expiry date on the outer box label.

Safety precautions:

Please refer to the material safety data sheet for further information.

Quality control specifications:

HyperLadder 1kb is extensively tested quality prior to release.

Notes:

For research or further manufacturing use only.

Trademark:

HyperLadder is a trademark of Bioline Reagents Ltd

Features

- Easy size determination
- 14 sharp bands from 200 bp – 10,037 bp
- Ready-to-use format
- Optional mass determination

Description

HyperLadder 1kb is a popular ready-to-use molecular weight marker, especially designed for easy size determination. This ready-to-use format reduces handling steps and saves time; simply transfer HyperLadder 1kb from the vial to the gel.

HyperLadder 1kb produces a pattern of 14 regularly spaced bands, ranging from 200 to 10,037 bp. To allow easy identification and orientation, the 1000 bp and the 10,037 bp band have the highest intensity. Optionally the HyperLadder can be used for mass determination.

A 5x sample loading buffer is supplied for your convenience. Under no circumstances should it be used to dilute/load ladder.

Components

Product	100 Lanes	200 Lanes	500 Lanes
HyperLadder™ 1kb	500 µL	2 x 500 µL	5 x 500 µL
5x Sample Loading Buffer	1 mL	1 mL	1 mL

Associated Products

Product	Pack size	Cat. No.
Agarose	100 g	BIO-41026
Agarose Tablets	150 g	BIO-41028

Protocol

Vortex the tube and use 5 µL per lane. There is no need to add loading buffer to the ladder.

Use the 5x loading buffer for sample loading, under no circumstances should it be used for diluting the ladder. The blue dye in the loading buffer runs at approximately 4 bp on a 1% gel.

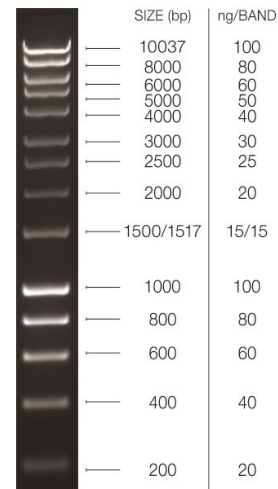
Composition

This marker is composed of a restriction digest plus one or more PCR products.

Effective DNA Separation Range - Agarose Gels

Recommended % Agarose (w/v)	Effective Separation Range of Linear DNA* (bp)
0.3	5,000-60,000
0.5	1,000-20,000
0.7	800-12,000
1.0	500-10,000
1.2	400-7,000
1.5	200-3,000
2.0	100-2,000
2.5	50-100
3.0	10-75

* Circularized plasmids can be cut and linearized by an appropriate restriction enzyme to measure their molecular weight



Bioline Reagents Ltd
UNITED KINGDOM

Tel: +44(0)20 8830 5300
Fax: +44 (0)20 8452 2822

Meridian Life Science Inc.
USA

Tel: +1 901 382 8716
Fax: +1 901 382 0027

Bioline GmbH
GERMANY

Tel: +49 (0)3371 60222 00
Fax: +49(0)3371 60222 01

Bioline (Aust) Pty. Ltd
AUSTRALIA

Tel: +61 (0)2 9209 4180
Fax: +61 (0)2 9209 4763