

# DNA Loading Buffer

Batch No.:	Product	Catalog number
See vial	5x Loading Buffer Blue	BIO-37045: 2 x 1ml
	5x Loading Buffer Red	BIO-37068: 2 x 1ml
	5x Loading Buffer Tri-Color	BIO-37070: 2 x 1ml



A Meridian Life Science® Company

## Storage and Stability:

The DNA Loading Buffer is shipped at ambient temperature and stored at -20°C.

## Expiry

When stored under the recommended conditions and handled correctly, full activity of the kit is retained until the expiry date on the outer box label.

## Safety precautions:

This product is for R&D use only, not for human use, or any other use. Please refer to the material safety data sheet for information regarding hazards and safe handling practice.

## Quality control specifications:

Bioline operates under ISO 9001 Management System. DNA Loading Buffer is extensively tested for batch-to-batch reproducibility prior to release.

## Trademarks

MyTaq and HyperLadder are trademarks of Bioline Reagents Limited.

## Notes

Research Use Only.

## Features:

- Colored loading for easy recognition
- No need to add dye
- Guarantee reproducible results

## Applications:

- To monitor migration rate during agarose electrophoresis
- Loading of samples onto DNA agarose gels

## Description

The Colored DNA Loading Buffers are ready-to-use solutions premixed with bromophenol blue (Blue), cresol red (Red), orange G and xylene cyanol FF (TriColor). The dyes in the Colored DNA Loading Buffers migrate at different rates depending on the dye and the concentration of the agarose gel (see Dye Migration Table below). This allow users to monitor DNA migration, and therefore increase the versatility of their DNA analysis, by choosing the buffer most suited to their application.

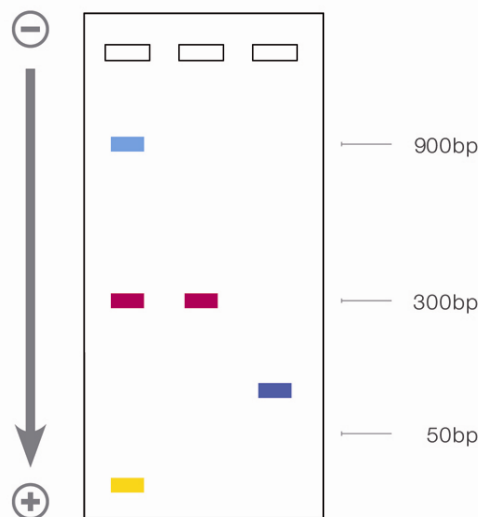
## Recommended protocol

1. Add 1 volume of loading buffer to 4 volumes of sample
2. Mix well by pipeting
3. Load carefully on agarose gel and run as normal

## Dye mobility table:

The following table gives the approximate migration rates of dyes in different agarose concentrations in TAE buffer. The values indicate the size of DNA fragments with which the dye will co-migrate at that particular gel concentration.

Agarose gel Concentration	Xylene Cyanol FF	Bromophenol Blue	Cresol Red	Orange G
0.7%	8000	600	3000	100
1.0%	4000	400	1500	50
1.5%	2000	250	900	20
2.0%	900	120	300	<10
3.0%	400	50	>100	<10



**Graphic representation of DNA Loading Buffers on a 2% agarose gel (bands are approximate).**

Lane 1. 5x DNA Loading Buffer Tri-Color

Lane 2. 5x DNA Loading Buffer Red

Lane 3. 5x DNA Loading Buffer Blue

## Associated products:

Product Name	Pack Size	Catalog No.
Agarose, Molecular Grade	500g	BIO-41025
Agarose Tablets	500g	BIO-41027
MyTaq™ DNA Polymerase	500 Units	BIO-21105
HyperLadder™ 1kb	100 Lanes	BIO-33058

Bioline Reagents Ltd  
UNITED KINGDOM

Tel: +44 (0)20 8830 5300  
Fax: +44 (0)20 8452 2822

Bioline USA Inc.  
USA

Tel: +1 888 257 5155  
Fax: +1 508 880 8993

Bioline GmbH  
GERMANY

Tel: +49 (0)33 7168 1229  
Fax: +49 (0)33 7168 1244

Bioline (Aust) Pty. Ltd  
AUSTRALIA

Tel: +61 (0)2 9209 4180  
Fax: +61 (0)2 9209 4763